

**THE WEST AFRICAN EXAMINATIONS COUNCIL,
GHANA**



**BECE FOR
SCHOOL CANDIDATES, 2024**

**CAREER TECHNOLOGY
PAPER 2B**

FINAL MARKING SCHEME

FINAL MARKING SCHEME
BECE SC 2024
(CAREER TECHNOLOGY - PAPER 2B)
PART B

QUESTION FOUR (COMPULSORY)

(a) Re-arranging the operations for preparing the tenon in sequential order:

- II. Prepare the workpiece to the required dimensions;
- IV. Measure and cut the workpiece;
- V. Mark-out to the required sizes;
- VI. Hold the workpiece firmly in position and cut the sides of the tenon;
- I. Cut off the wastes on the sides of the tenon;
- III. Clean the workpiece with the appropriate tool.

[6 correctly arranged operations x 1 mark each = 6 marks]
NB: Award marks if candidate writes the roman numerals only without rewriting the accompanying statements.

(b) (i) Tools for preparing the tenon:

- | | | |
|--------------------|--------------------|-----------------|
| • Tenon saw; | • Bench hold fast; | • Jig saw; |
| • Dovetail saw; | • Rule; | • Coping saw; |
| • Smoothing plane; | • Marking knife; | • Bench vice; |
| • Jack plane; | • G-Clamp; | • Pencil; |
| • Try square; | • Bench hook; | • Tape measure. |
| • Chisel; | • Table saw; | |

Bench

[Any 2 x 1 mark each = 2 marks]

(ii) Adhesives for assembling the joint:

- | | | |
|------------------------|----------------|-----------------|
| • Contact glue; | • Animal glue; | • Scotch glue; |
| • PVA glue/white glue; | • Epoxy glue; | • Gorilla glue. |

[Any 2 x 1 mark each = 2 marks]

(c) (i) Stating one reason for observing safety in making the joint:

- To prevent accident/injury in the workshop;
- To prevent damages to materials;
- To prevent damages to tools;
- To prevent damages to equipment;

[Any one @ 3 marks]

(ii) Giving one importance of appraising the tenon produced:

- | | |
|---------------------------|--------------------------------------|
| • To identify strengths; | • To make modifications; |
| • To identify weaknesses; | • To assess the quality of the tenon |

[Any one @ 2 marks]

TOTAL : 15 MARKS

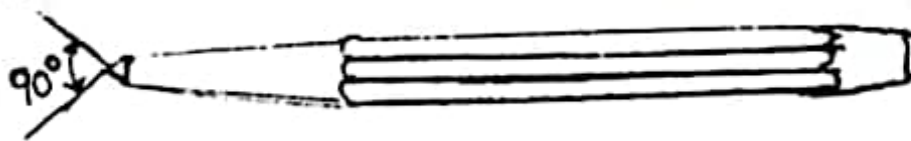
QUESTION FIVE

(a) Copying and completing Table 1

<i>Place of work</i>	<i>One measuring tool</i>	<i>One marking out tool</i>
(i) Building site	Surveyor's tape; Head pan; Folding rule; Gauge box; Tape measure; Wheel barrow. <i>Gauge Rod.</i>	Profile board; Peg; Chalk; Line and pins; Builder's square; Straight edge; Lath
(ii) Wood workshop	Tape measure; Folding rule; Rule.	Pencil; Try square; Marking gauge; Mortise gauge; Marking knife; Pencil gauge; Cutting gauge; Wing compasses.
(iii) Metal workshop	Steel rule; Outside calipers; Tape measure; Inside calipers; Vernier caliper; Micrometer screw gauge; Spring dividers.	Scriber; Dot punch; Centre punch; Pair of dividers; Odd leg calipers; Try square; Pencil.

Copying the table @ 1 mark
6 tools @ 1 mark each = 6 marks
[7 marks]

(b) (i) Freehand pictorial sketch of the centre punch:



OR



Sketch = 4 marks
Indicating the Point angle = 2 marks
[6 marks]

(ii)

(iii) Stating one use of the centre punch:

- It is used for locating the centre of a hole to be drilled;
- For correcting an off-centered position of a hole to be drilled.

[2 marks]

TOTAL : 15 MARKS

QUESTION SIX

(a) Stating one suitable finish for each of the following products:

(i) Plastered block wall:

- Paint; *oil/Emulsion* *Terazzo*
- Wallpaper;
- Tile;
- Wood paneling;
- Plastic paneling.

[Any one @ 1 mark]

(ii) Metal gate:

- Oil Paint;
- Galvanizing;
- Anodizing;
- Epoxy coating;
- Varnish.

[Any one @ 1 mark]

(iii) Wooden wardrobe:

- Varnish;
 - Paint; *oil/Emulsion*
 - Lacquer;
 - Wax;
 - Synthetic sheets;
 - Stain.
- wall-paper*

[Any one @ 1 mark]

(b) Stating the appropriate saw for cutting a given length of wood:

(i) across the grain:

- Cross cut saw; *Back Saw*
- Tenon saw;
- Hand saw;
- Panel saw.

[Any one @ 2 marks]

(ii) along the grain:

- Rip saw

[2 marks]

(c) Stating two suitable materials each used for joining a:

(i) wooden top to a metal base:

- Bolts and nuts;
- Screws;
- Brackets;
- Angle plates;
- Adhesives;
- Pop rivet.

[Any 2 × 1 mark = 2 marks]

(ii) plastic top to a wooden base:

- Adhesives;
- Screws;
- Brackets;
- Angle plates.

[Any 2 × 1 mark = 2 marks]

(d) Stating factors to consider in setting up a susu box manufacturing business:

- Land;
- Location;
- Capital;
- Market;
- Availability of power source;
- Availability of raw material;
- Labour.

**[Any 4 × 1 mark = 4 marks]
TOTAL : 15 MARKS**